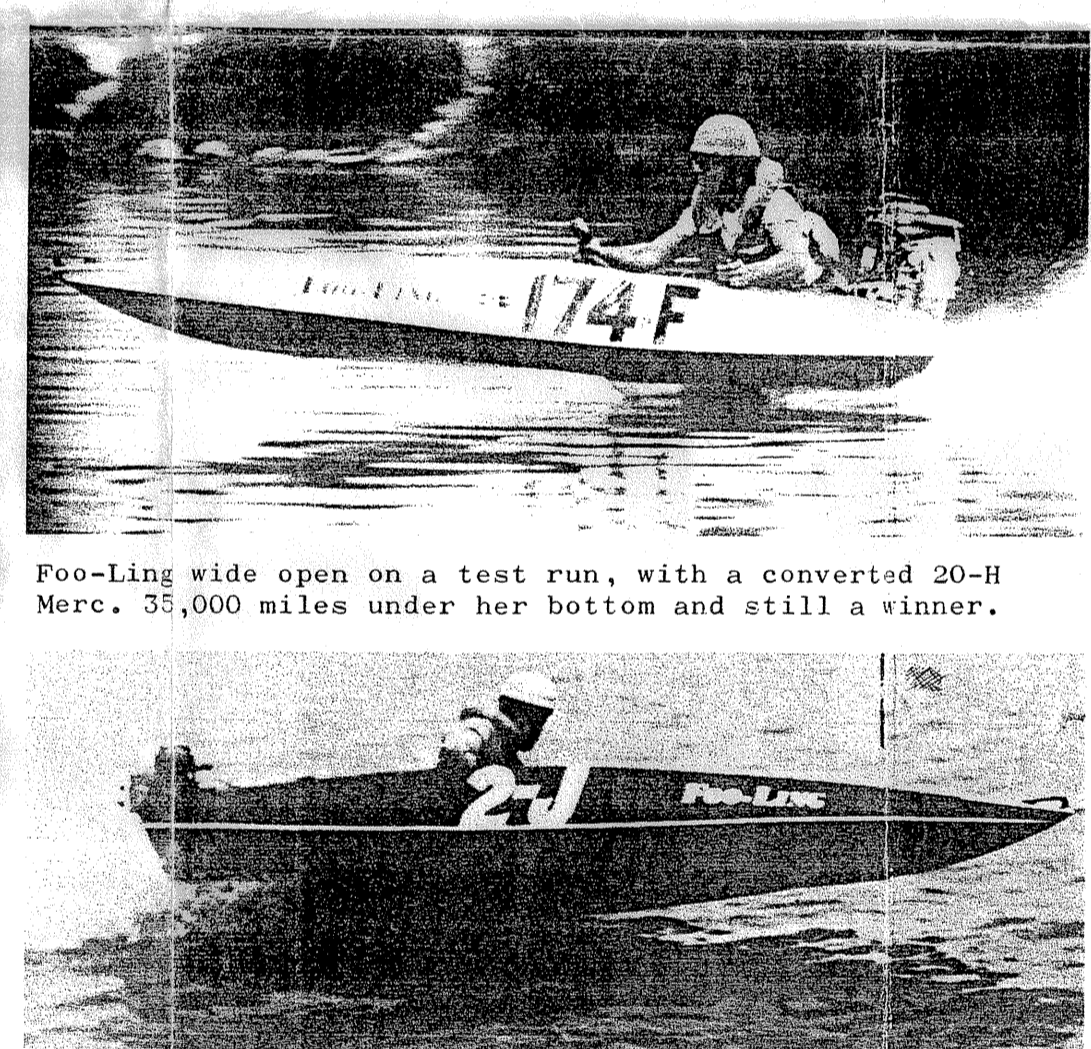


Motor all set up and ready to run. Note aluminum plate under motor to protect transom. Shock cord holding motor down is OK for testing out, but in a race I also tie her down with rope.



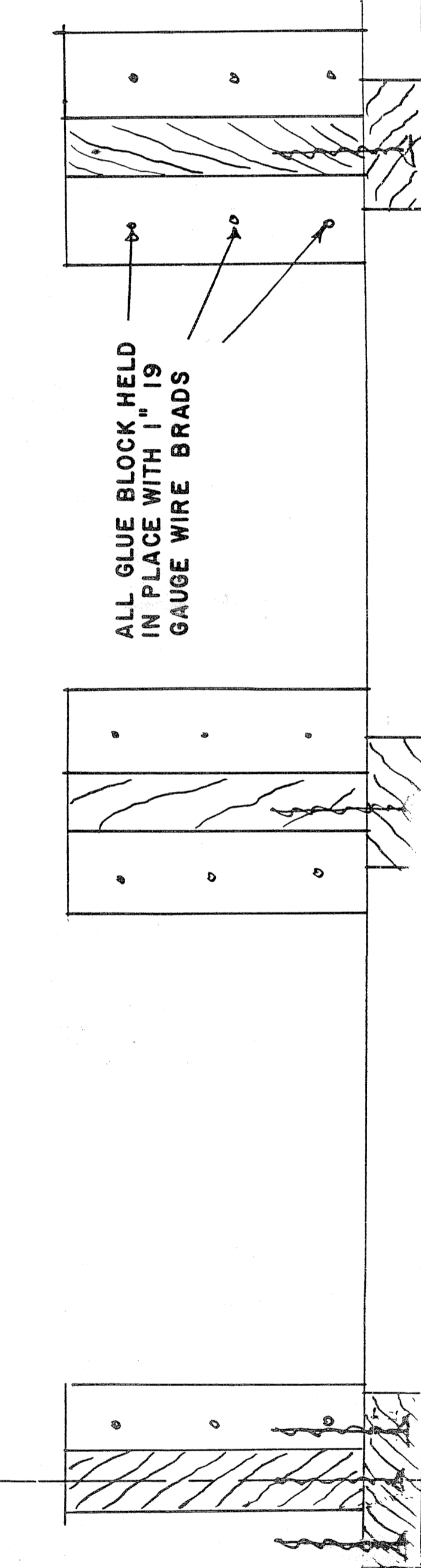
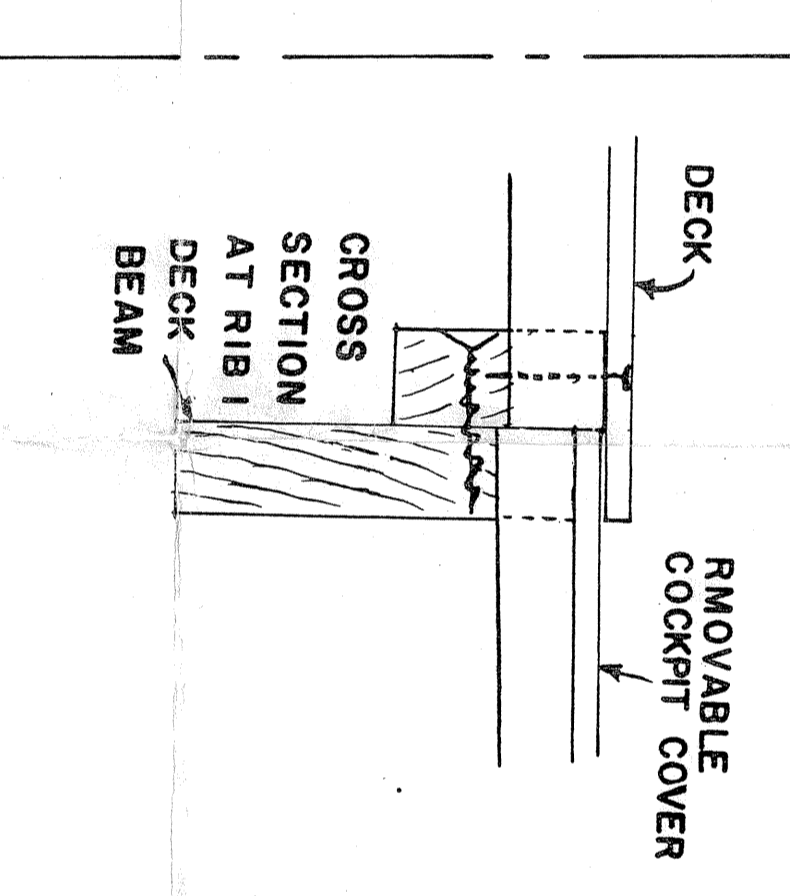
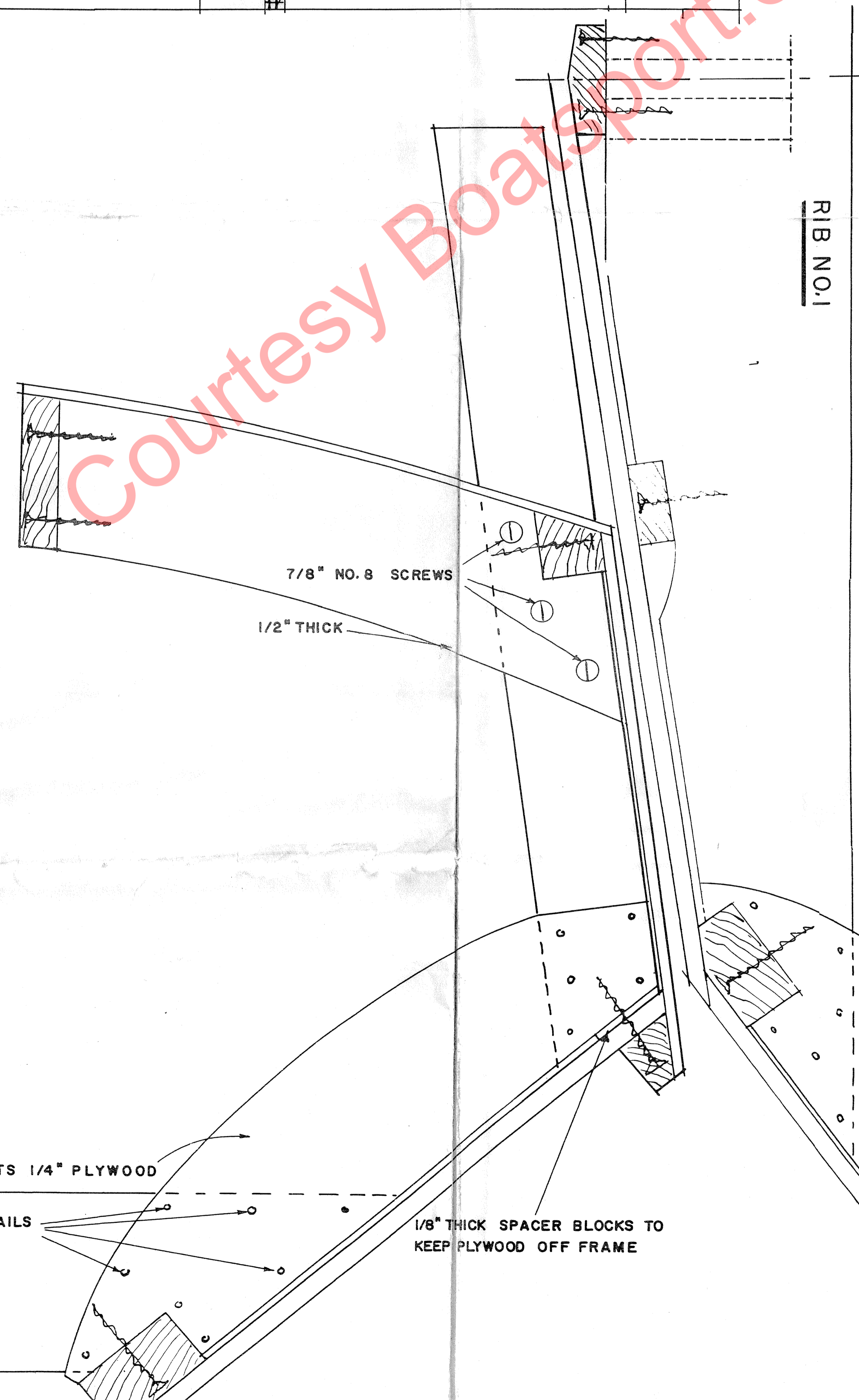
Here she is banking right up on her side in a test run.



At Hanson, Mass., out in front again. Note that sharp turn we just completed. We stole two straight fists.



Here we are giving Craig DeWald a hard time, with no one else in sight.



LOOKING AT ALL RIBS & TRANSOM FROM THE FRONT